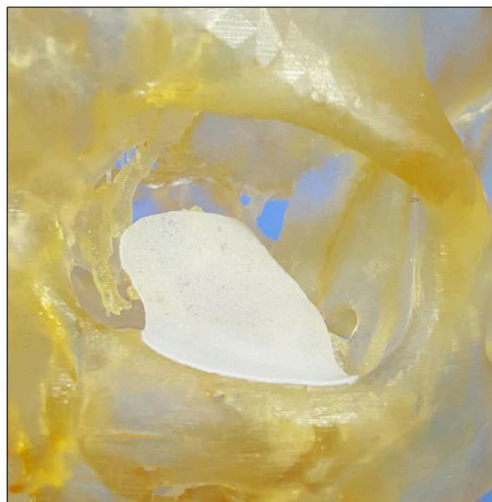
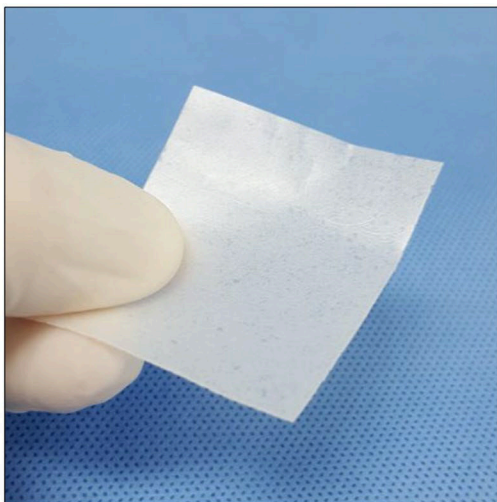


PORIFEROUS Polyethylene Implants Featuring SU-POR[®] Biomaterial.

**PATENTED
Product
US09724198**

Poriferous is pleased to offer the following patented device.



Membrane Sheet

The Membrane Sheet is a composite orbital floor implant with a non-integrating layer of solid polyethylene, laminated to a porous polyethylene layer that may allow for tissue ingrowth.

The flexible and pliable properties of the Su-Por Biomaterial allow for contouring and shape retention.

Cat #	Length	Width	Thickness
4231	38 mm	50 mm	0.6 mm
4016	38 mm	50 mm	1.0 mm
4241	38 mm	50 mm	1.6 mm
4017	50 mm	76 mm	1.0 mm
4018	50 mm	76 mm	1.6 mm

**NEW! 0.6mm Thin
Patent 09724198**